



DIGIGAUGE

PRESSURE DISPLAY SYSTEM

INSTRUCTION MANUAL



Thank you for purchasing DigiGauge by ZAETECH

Disclaimer – DigiGauge is for show and off road use only. By using this device you are agreeing to the terms of use and warranty on page seven.

WIRING DIAGRAM

Function		Wire Color
Power (+12v)	---	Red
Ground	---	Black
Ignition	---	Orange
Headlight	---	Purple

Warning: Disconnect the vehicle battery ground terminal before wiring

INCLUDED COMPONENTS

- DigiGauge ECU
- DigiGauge Wiring Harness
- (5) 200psi Pressure Sensors

With Optional Screen:

- DigiGauge LCD Display Screen
- 25ft Screen Harness



INSTALLATION

Step 1:

- 1) Install the (4) bag pressure sensors into your manifold's sensor ports, or in-line with your bag supply lines.
- 2) Install the tank sensor vertically onto your tank or manifold supply line with the threads facing down to prevent moisture build up in the sensor.
- 3) Plug in all (5) sensor wires to the corresponding sensors.

Note: Each sensor plug is labeled.

Note: You must install the tank sensor as directed. Other orientations are prohibited.



Step 2:

Note: This step only applies if you have purchased the optional screen.

- 1) Insert one end of the included 25ft screen cable to the screen port on the DigiGauge harness.
- 2) Insert the other end of the included 25ft screen cable to the port located on the back side of the DigiGauge screen



Step 3:

- 1) Connect the red power wire to a constant 12v source.
- 2) Securely ground the black wire.
- 3) Connect the orange ignition wire to a 12v ignition source.
- 4) Connect the purple headlight wire to a 12v headlight source.
- 5) Plug the wiring harness into the DigiGauge device.



Note: The plug on the DigiGauge device will glow red when powered.

Note: DigiGauge is designed to always stay on to communicate with TouchBox. If this functionality is not desired then refer to the “Detailed Information” section on page six for alternative wiring.

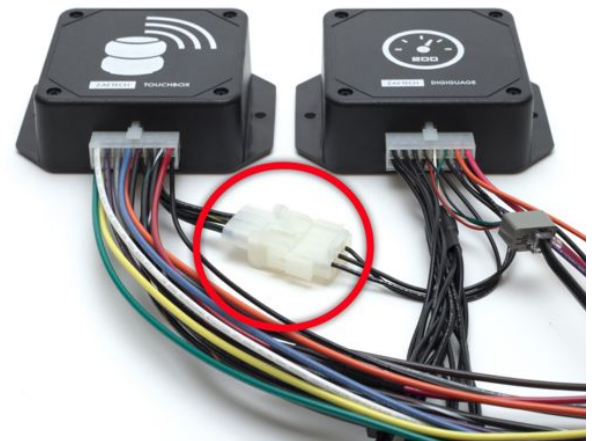


Step 4:

Note: This step only applies if you have purchased the TouchBox Wireless Controller

- 1) Connect the 3-pin plug on the DigiGauge harness to the mating 3-pin plug on the TouchBox harness.

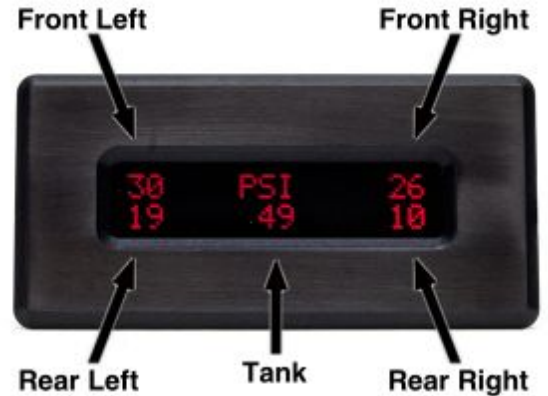
Note: This adds the ability for DigiGauge to send pressure values to TouchBox and display them on the connected wireless device.



OPERATION

Pressure Display

This is the main screen where you view your pressures. The numbers in each corner of the screen corresponds to the pressure of that corner of your air suspension. The middle number is your tank pressure. All readings are in pounds per square inch (PSI).



ADDITIONAL FEATURES

Pressure Display on TouchBox App

The small 3-pin plug on the wiring harness is an expansion slot for TouchBox. This will allow DigiGauge to send pressure readings to TouchBox and display them on your wireless device via the TouchBox application. Your DigiGauge device is set up to send pressure readings when connected to TouchBox.



Positional Faceplate

The faceplate of the DigiGauge device is a perfect square. It is designed so that you may change the orientation of the logo to suit your trunk layout. Just remove the (4) screws and rotate it to any direction you desire.



Note: Do not tamper with the electronics when the cover is off. It may damage your device.

DETAILED INFORMATION

- DigiGauge is designed to stay on even after the vehicle's ignition has been switched off. This is required in order to provide wireless pressure display via the TouchBox smart phone app. If this functionality is not desired, the user may instead connect the red wire to the ignition source to have DigiGauge fully turn off when the vehicle is off.
- The DigiGauge device has a very small continuous power draw (30mA) which is acceptable for a frequently driven vehicle. Disconnect your DigiGauge device if your vehicle is going to sit unused for longer than four weeks.

TROUBLESHOOTING

The screen is not displaying pressures or won't turn on

- Ensure the DigiGauge device powered on and the plug on the device is glowing red. If you do not see the red glow then the device is not receiving 12 volts. Wiring and fuses should be double-checked.
- Check the screen cable connection on both ends and ensure that it is securely connected.
- Unplug the main harness from DigiGauge, wait a few moments and re-insert the plug. This will power cycle the device.

The screen flickers or shows different characters

- You may not have a solid connection from the screen to the main device. Double check screen cable connections for loose or damaged wires.

TouchBox is not displaying pressure values

- You may not have a solid connection between the DigiGauge and TouchBox harnesses. Double check connection for loose or damaged wires.
- Unplug the main harnesses from DigiGauge and TouchBox, wait a few moments and re-insert the plugs. This will power cycle the devices.

TERMS OF USE

- DigiGauge is for show and off road use only.
- DigiGauge is designed to work with pressure vessels up to 200psi. It is not to be installed on pressure vessels that operate over 200psi.
- You are required to install the ignition wire to a 12v ignition source.
- You must wire your DigiGauge with the supplied wiring diagram. Any other method is prohibited.
- The vehicles battery ground must be disconnected before wiring.
- You must install the tank sensor as directed on step one.
- DigiGauge is only compatible with the supplied pressure sensors.
- The DigiGauge device is not weather proof. It must be installed in a dry location inside the cabin of the vehicle.
- DigiGauge and TouchBox have a similar plug on the main harness. Ensure that you are plugging the correct harness into the correct device. Failure to do so will result in damaging both devices.

WARRANTY

Limited Warranty. Zaetech, LLC warrants that upon delivery and for a period of 90 days following delivery, the DigiGauge will be free from defects in material and workmanship under proper and normal use. Failure to comply with the terms of use shall immediately void this warranty. You are responsible for proper installation, operation, and maintenance as specified in our publications on the DigiGauge for using the product in recommended applications within rated capacities. **This warranty gives you specific legal rights, and you may also have other rights which vary from state to state.**

Remedies. In accordance with the terms of the limited warranty stated above (“Warranty”), Zaetech, LLC will repair or replace any defective DigiGauge, provided that written notice of the defect is received by Zaetech, LLC within thirty (30) days of the appearance of such defect. If notice is not given within such period, any claim for breach of warranty shall be conclusively deemed to have been waived and Zaetech, LLC shall not be liable under this Warranty.

Limitations on Warranty. Zaetech LLC’s liability for any defect in the DigiGauge, whether based on contract, tort, warranty, strict liability, or any other theory, shall not exceed the purchase price of the defective DigiGauge. **THIS WARRANTY IS IN LIEU OF ALL OTHER WARRANTIES, WHETHER ORAL, WRITTEN, EXPRESS, IMPLIED, STATUTORY, OR OTHERWISE. IN PARTICULAR, THERE IS NO WARRANTY OF MERCHANTABILITY OR FITNESS FOR A PARTICULAR PURPOSE. THE REMEDY OF REPAIR OR REPLACEMENT PROVIDED UNDER THIS WARRANTY IS EXCLUSIVE AND IN LIEU OF ALL OTHER REMEDIES. ZAETECH, LLC SHALL HAVE NO LIABILITY TO THE CUSTOMER FOR CONSEQUENTIAL, SPECIAL, INCIDENTAL OR PUNITIVE DAMAGES OF ANY KIND WHATSOEVER, INCLUDING, BUT NOT LIMITED TO, PERSONAL INJURY NOT CAUSED BY NEGLIGENCE OF ZAETECH, LLC, PROPERTY DAMAGE, LOST PROFITS OR OTHER ECONOMIC INJURY DUE TO ANY DEFECT IN THE GOODS OR ANY BREACH OF THIS AGREEMENT BY ZAETECH, LLC. ZAETECH, LLC SHALL NOT BE LIABLE TO THE CUSTOMER IN TORT FOR ANY DEFECT IN THE DESIGN OR MANUFACTURE OF THE GOODS.** No representative, agent or dealer of Zaetech LLC has authority to modify, expand, or extend this Warranty, to waive any of the limitations or exclusions of this Warranty, or to make any different or additional warranties with respect to any DigiGauge or services furnished by Zaetech, LLC. **Some states do not allow limitations on how long an implied warranty lasts, so the above limitation may not apply to you. Some states do not allow the exclusion or limitation of incidental or consequential damages, so the above limitation or exclusion may not apply to you.**



zaetech.net